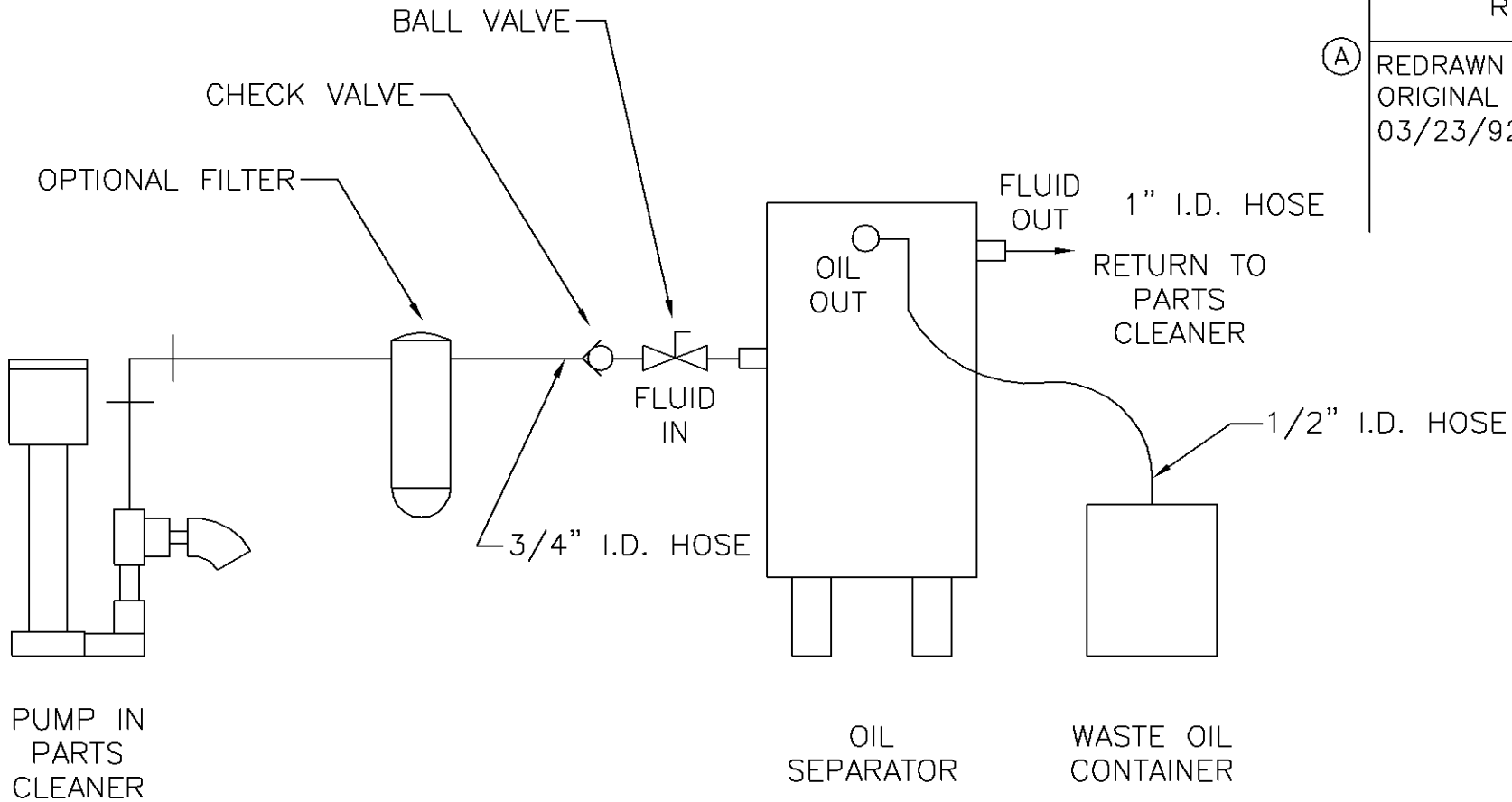


795-08002

PAGE: 1 OF: 1

REVISIONS

(A) REDRAWN IN CAD FROM ORIGINAL DATED 03/23/92 BY R. SOBLE.



A

NOTES:

UNSPECIFIED TOLERANCES:

DECIMALS: .000 ± .005  
.00 ± .02

FRACTIONS: ± 1/32

BEVELS AND CHAMFERS: ± 2'

ANGULARITY, SQUARENESS,  
AND PARALLELISM:  
± .015 INCHES PER FOOT

CONCENTRICITY:  
T.I.R. EQUALS TOLERANCE  
ON DIAMETER

DIMENSIONING SYSTEM:  
ANSI/ASME Y14.5M

DO NOT SCALE DRAWINGS  
INCHES (MILLIMETERS)  
DEBURR ALL SHARP EDGES

RAW MATERIAL

QTY. REQ'D

FINISH:

DRAWN BY MDB

DATE 11/08/00

CHECKED BY B.S.

SCALE NONE

GRAYMILLS CORPORATION

CHICAGO, ILLINOIS 60613

PART NAME CONNECTION - OSEP-5

NEXT ASSEMBLY

ENGINEERING FILE:

CUSTOMER: GRAYMILLS

PAGE: 1 OF: 1

MODEL NUMBER

OSEP-5

DRAWING NUMBER

795-08002

CAD FILE: J:\PURCPRT\795\08002.DWG