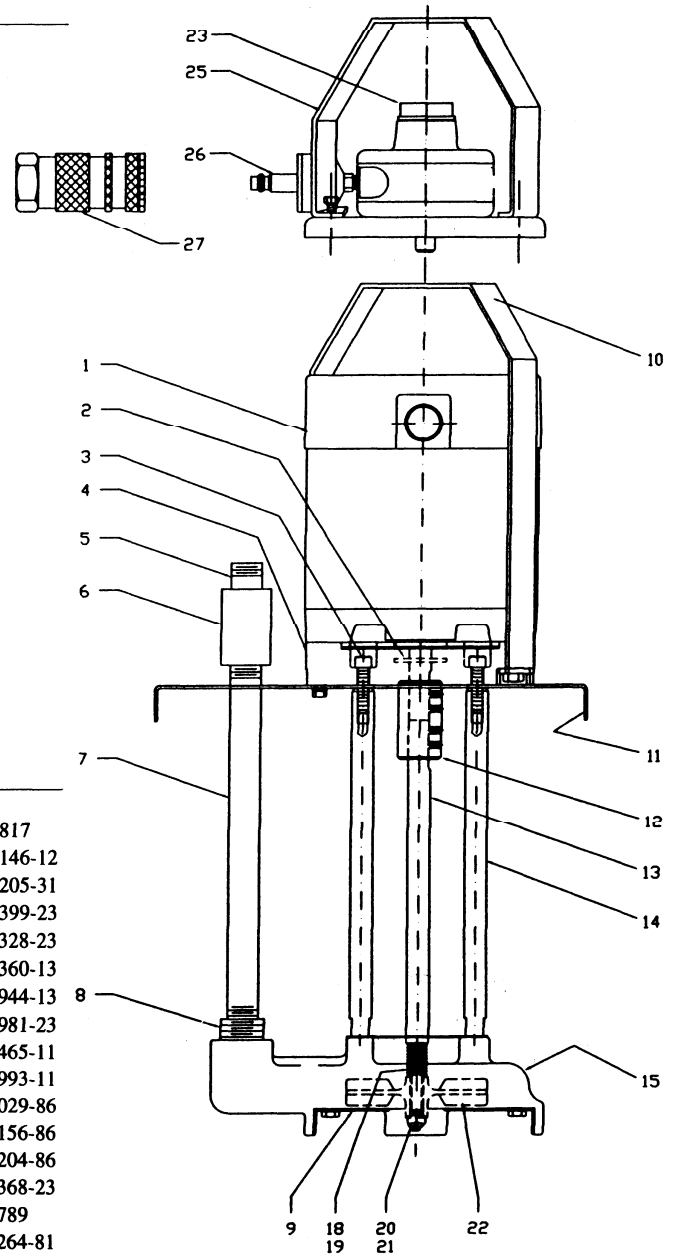


AGITOR TRI-ROD STYLE PUMPS WITH ELECTRIC MOTORS

ITEM	DESCRIPTION	H53T	H103T
1	Motor		
2	Slinger	744-11817	744-11817
3	Rod Bolts (3) ea	752-06146-12	752-06146-12
4	Vapor Diffuser -Rod Support	532-22205-31	532-22205-31
7	Pipe	720-06518-13	720-06518-13
8	Reducer	724-03704-23	724-03704-23
9	Volute Cover Plate (for item 15)	660-24564-81	660-13199-23
10	Motor Handle	601-18465-11	601-15356-11
11	Container Lid or Mounting Plate	420-23888-11	420-18991-11
12	Coupling 5/8" bore 416 SS	573-12029-86	573-12029-86
13	Shaft 5/8" dia 416 SS	551-14073-86	551-14073-86
14	Rods 416 SS (3) ea	562-22204-86	562-22204-86
15	Volute, one piece	504-25250-23	504-25250-23
IMPELLER KIT consists of			
18	Spring	765-03264-81	765-03264-81
19	Washer	754-03093-12	754-03093-12
20	Castle Nut	543-16580-74	543-16580-74
21	Cotter Pin	756-00893-81	756-00893-81
22	Impeller	525-13710-74	525-13710-74
By-Pass Assembly complete			
	FBP	FBP	FBP
AGITOR TRI-ROD STYLE PUMPS WITH AIR MOTORS			
23	Air Motor #2 Muffler	387-07248	387-07248
25	Motor Handle	601-23891-11	601-23891-11
26	Needle Valve	738-02978-41	738-02978-41
27	Quick Coupler	741-05143	741-05143

ITEM	DESCRIPTION	H104T	H204T	H304T
1	Motor (see separate list)			
2	Slinger	744-11817	744-11817	744-11817
3	Rod Bolts (3) ea	752-06146-12	752-06146-12	752-06146-12
4	Vapor Diffuser -Rod Support	532-22205-31	532-22205-31	532-22205-31
5	Short Nipple	720-01399-23	720-01399-23	720-01399-23
6	Coupling	724-03328-23	724-03328-23	724-03328-23
7	Pipe	720-06360-13	720-06360-13	720-06360-13
8	Reducer	724-05944-13	724-05944-13	724-05944-13
9	Volute Cover Plate (for item 15)	660-25981-23	660-25981-23	660-25981-23
10	Motor Handle	601-15356-11	601-18465-11	601-18465-11
11	Container Lid or Mounting Plate	420-18991-11	420-18992-11	420-18993-11
12	Coupling 5/8" bore 416 SS	573-12029-86	573-12029-86	573-12029-86
13	Shaft 5/8" dia 416 SS	551-14156-86	551-14156-86	551-14156-86
14	Rods 416 SS (3) ea	562-22204-86	562-22204-86	562-22204-86
15	Volute, one piece	504-26368-23	504-26368-23	504-26368-23
IMPELLER KIT consists of				
18	Spring	765-03264-81	765-03264-81	765-03264-81
19	Washer	754-03093-12	754-03093-12	754-03093-12
20	Castle Nut	543-16580-74	543-16580-74	543-16580-74
21	Cotter Pin	756-00893-81	756-00893-81	756-00893-81
22	Impeller	525-13711-74	525-13711-74	525-13711-74
By-Pass Assembly complete				
	FBP	FBP	FBP	FBP
AGITOR TRI-ROD STYLE PUMPS WITH AIR MOTORS				
23	Air Motor #2 Muffler	387-07248	387-07248	387-07248
25	Motor Handle	601-23891-11	601-23891-11	601-23891-11
26	Needle Valve	738-02978-41	738-02978-41	738-02978-41
27	Quick Coupler	741-05143	741-05143	741-05143



Note 1: Interim models of Tri-Rod Pumps used support rods with male threads at both ends. Upper ends were secured with a nut. Current models use a tapped hole at the upper end, secured with a screw. These current parts are interchangeable with the interim parts.

Note 2: The interim design of Tri-Rod H53 and H103 Pumps used the cast "upper volute", and a cast "lower volute". Current models use a "volute, one piece", item 15 and a "volute cover plate," item 9.

Note 3: For Tri-Rod Style Air Motor Pumps, use items 2-9 and 11-27.

AGITOR TRI-ROD STYLE PUMPS WITH ELECTRIC MOTORS

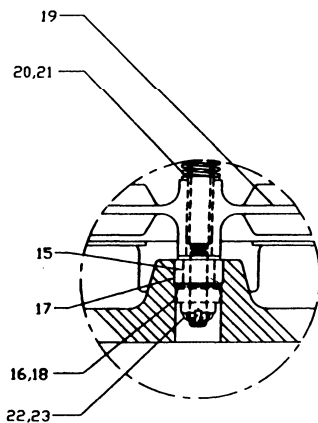
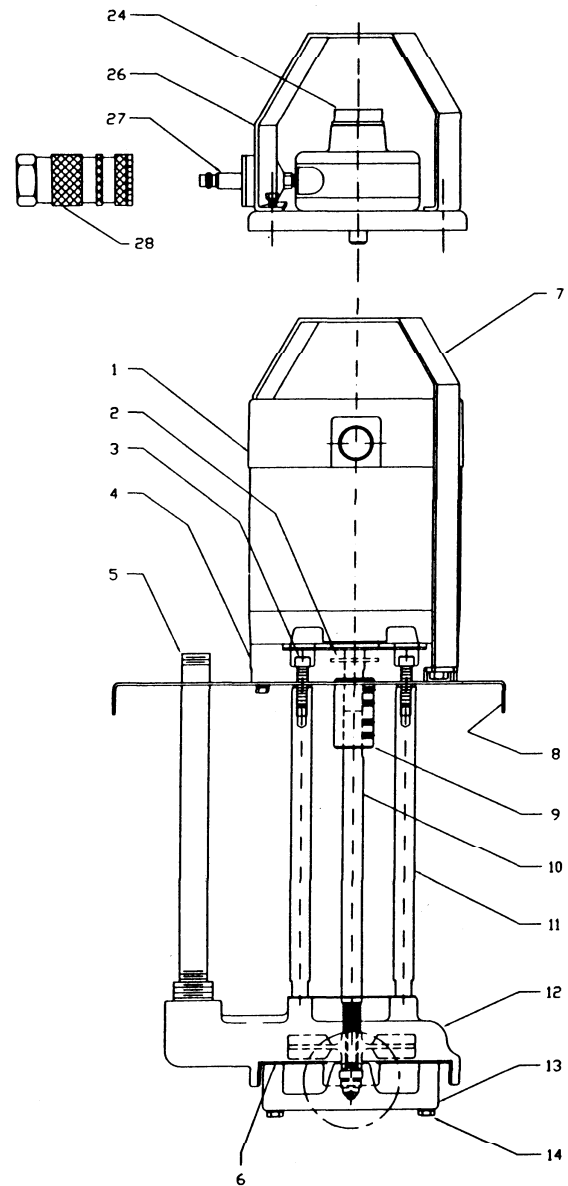
ITEM	DESCRIPTION	H553T-1/2	H554T-1/2
1	Motor		
2	Slinger	744-11817	744-11817
3	Rod Bolts (3) ea	752-06146-12	752-06146-12
4	Vapor Diffuser - Rod Support	532-22205-31	532-22205-31
5	Pipe	720-06182-13	720-06600-13
6	Volute Cover Plate (for item 12)	660-13199-23	660-25981-23
7	Motor Handle	601-18465-11	601-18465-11
8	Container Lid or Mounting Plate	435-23446-11	435-23446-11
9	Coupling 5/8" bore 416 SS	573-12029-86	573-12029-86
10	Shaft 5/8" dia 416 SS	553-22980-86	553-23305-86
11	Rods 416 SS (3) ea	562-22906-86	562-22906-86
12	Volute, one piece	504-25250-23	504-26368-23
13	Bushing Retainer	528-26190-23	528-26191-23
14	Screws for Bearing Housing	752-02702-12	752-05655-12
15	Sleeve	760-18308	760-18308
16	Shaft Spacer	581-31665-63	581-31665-63
17	Bronze Bushing	760-06508	760-06508
18	Drive Washer	754-18294-88	754-18294-88
IMPELLER KIT consists of		401-21789	401-21789
19	Impeller	525-13711-74	525-13711-74
20	Spring	765-03264-81	765-03264-81
21	Washer	754-03093-12	754-03093-12
22	Castle Nut	543-16580-74	543-16580-74
23	Cotter Pin	756-00893-81	756-00893-81

AGITOR TRI-ROD STYLE PUMPS WITH AIR MOTORS

Use also items 2-6 and 8-23

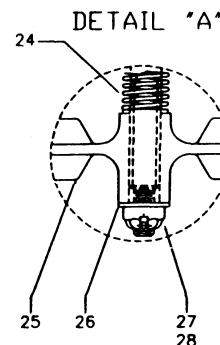
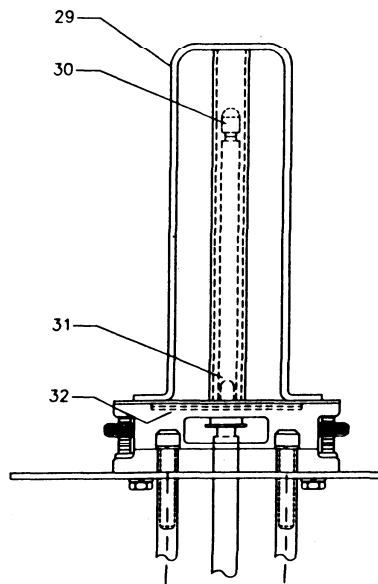
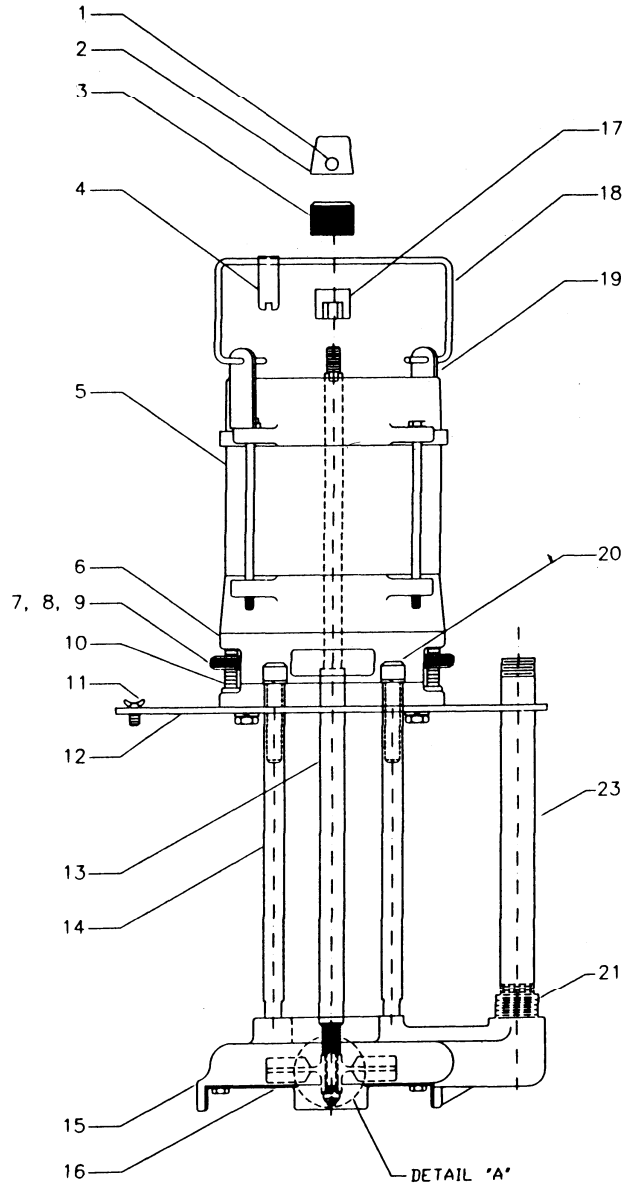
24	Air Motor #2 Muffler	387-07248	387-07248
26	Motor Handle	601-28927-11	601-28927-11
27	Needle Valve	738-02978-41	738-02978-41
28	Quick Coupler	741-05143	741-05143

Note: Interim models of Tri-Rod Pumps used support rods with male threads at both ends. Upper ends were secured with a nut. Current models use a tapped hole at the upper end, secured with a screw. These current parts are interchangeable with the interim parts.



AGITOR PUMPS WITH HOLLOW SHAFT MOTORS - TRI-ROD DESIGN

ITEM	DESCRIPTION	QH53-1/2K	QH103-1/2K
		QH53-1/4K	QH103-1/4K
1	Retainer Screw for Safety Cap	753-08045	753-08045
2	Safety Cap	538-15138-31	538-15138-31
3	Shaft Nut, round	573-14631-11	573-14631-11
4	Wrench	601-15233-11	601-15233-11
5	Motor		
6	Casting Vapor Diffuser	532-14534-11	532-14534-11
7	Spring for Spin Nut	765-05437-81	765-05437-81
8	Set Screw for Spin Nut	753-02877-81	753-02877-81
9	Spin Nut (2)	573-14626-43	573-14626-43
10	Spin Bolt (2)	568-14627-86	568-14627-86
11	Screws for Mounting Plate (3)	753-09839-16	753-09839-16
12	Container Lid or Mounting Plate	420-23888-11	420-18991-11
13	Pump Shaft	560-24624-86	560-24624-86
14	Rods, 416 SS (3) ea	562-22204-86	562-22204-86
15	Volute	504-25250-24	504-25250-24
16	Cover Plate	660-24564-81	660-24564-81
17	Driver	571-14630-41	571-14630-41
18	Handle	568-14635-11	568-14635-11
19	Handle Bracket	601-14623-11	601-14623-11
20	Rod Bolts (3) ea.	752-06146-12	752-06146-12
21	Bushing Reducer	724-03704-23	724-03704-23
23	Pipe	420-06518-13	420-06518-13
Impeller Kit consists of			
24	Spring	765-03264-81	765-03264-81
25	Impeller	525-13710-74	525-13710-74
26	Washer	754-03093-12	754-03093-12
27	Cotter Pin	756-00893-81	756-00893-81
28	Castle Nut	543-16580-74	543-16580-74
29	Shaft Protector & Carrier	435-14636-23	435-14636-23
30	Shaft Thread Protector	603-26467	603-26467
31	Locating Pin (2)	568-14632-11	568-14632-11
32	Disc	660-14628-11	660-14628-11



AGITOR PUMPS WITH HOLLOW SHAFT MOTORS - TRI-ROD DESIGN

ITEM	DESCRIPTION	QH104-1/2K	QH204-1/2K	QH304-1/2K
		QH104-1/4K	QH204-1/4K	QH304-1/4K
1	Retainer Screw for Safety Cap	753-08045	753-08045	753-08045
2	Safety Cap	538-15138-31	538-15138-31	538-15138-31
3	Shaft Nut, round	573-14631-11	573-14631-11	573-14631-11
4	Wrench	601-15233-11	601-15233-11	601-15233-11
5	Motor			
6	Casting Vapor Diffuser	532-14534-11	532-14534-11	532-14534-11
7	Spring for Spin Nut	765-05437-81	765-05437-81	765-05437-81
8	Set Screw for Spin Nut	753-02877-81	753-02877-81	753-02877-81
9	Spin Nut (2)	573-14626-43	573-14626-43	573-14626-43
10	Spin Bolt (2)	568-14627-86	568-14627-86	568-14627-86
11	Screws for Mounting Plate (3)	753-09839-16	753-09839-16	753-09839-16
12	Container Lid or Mounting Plate	615-14851-11	615-14851-11	615-14851-11
13	Pump Shaft	560-24625-86	560-24625-86	560-24625-86
14	Rods, 416 SS (3) ea	562-22204-86	562-22204-86	562-22204-86
15	Volute	504-26368-23	504-26368-23	504-26368-23
16	Cover Plate	660-25981-23	660-25981-23	660-25981-23
17	Driver	571-14630-41	571-14630-41	571-14630-41
18	Handle	568-14635-11	568-14635-11	568-14635-11
19	Handle Bracket	601-14623-11	601-14623-11	601-14623-11
20	Rod Bolts (3) ea.	752-06146-12	752-06146-12	752-06146-12
21	Bushing Reducer	724-05944-23	724-05944-23	724-05944-23
23	Pipe	720-06360-23	720-06360-23	720-06360-23
Impeller Kit consists of		401-21789	401-21789	401-21789
24	Spring	765-03264-81	765-03264-81	765-03264-81
25	Impeller	525-13711-74	525-13711-74	525-13711-74
26	Washer	754-03093-12	754-03093-12	754-03093-12
27	Cotter Pin	756-00893-81	756-00893-81	756-00893-81
28	Castle Nut	543-16580-74	543-16580-74	543-16580-74
29	Shaft Protector & Carrier	435-14636-23	435-14636-23	435-14636-23
30	Shaft Thread Protector	603-26467	603-26467	603-26467
31	Locating Pin (2)	568-14632-11	568-14632-11	568-14632-11
32	Disc	660-14628-11	660-14628-11	660-14628-11

